

Inj. REMOT Vet

DIURETIC

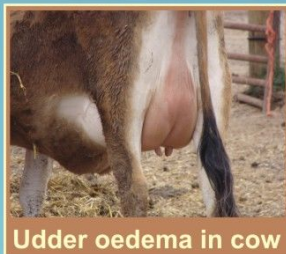
COMPOSITION

Each ml contains Frusemide 50 mg.

- ◆ Remot Vet is a loop diuretic drug.
- ◆ Used widely in the treatment of oedema.
- ◆ Eliminates fluid from the body cavity.

INDICATIONS

- Acute pulmonary oedema
- Post parturition oedema
- Udder oedema
- Hematuria (Blood in Urine)
- To eliminate urine/ fluid



AVAILABLE IN:
10 ml vial

DOSAGE

By I/M , I/V use only.

Large Animals:

1 – 2 mg/ KG Body Wt. (5 - 10 ml)

Small Animals:

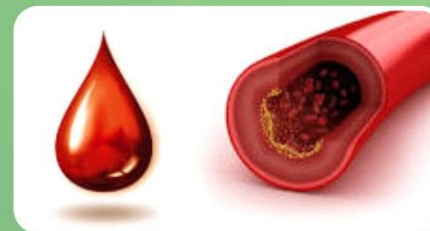
2 – 4 mg / Kg Body Wt. (1 – 3 ml)

Inj. CHROME

HAEMOSTATIC

COMPOSITION

Each ml contains
Carbazochrome Salicylate: 5 mg.



INDICATIONS

- ◆ Chrome is a powerful systemic coagulant.
- ◆ Used in capillary bleeding in visceral and internal organs.
- ◆ Controls bleeding during surgery, internal bleeding, bleeding from udder and open wound.

DOSAGE

By I/M use only

Large Animals: 20 – 25 mg (Total Dose)

Normally 5 – 10 ml

Small Animals: 5 – 10 mg (Total Dose)

AVAILABLE IN: 10 ml, 30 ml vials