

Inj. CALCIVET

Each ml : Calcium Levulinate 76.4 mg, Vit D3 5000 I.U, Vit B12 50 mcg

Calcium Requirement in dairy cattle
(500 Kg, 20 Litrs Milk yield)

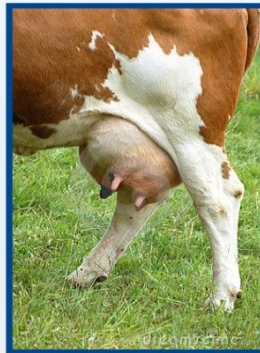
Purpose	Calcium Req.
Maintenance	20 g /day
For Milk yield @ 3.2 g / litre	64 g /day (Total 84 g)

- Total need of Calcium per day is 84 G / day.
- For high producing cows, the calcium requirements **may not be** met from pasture, fodder, feed or grains.
- 15 ml of Calcivet gives 115 G of Calcium for Milk animal.
- Vit D3 is required for Calcium absorption.
- Vit B12 is required for Blood Formation.



Useful In

- ◆ Milk Fever
- ◆ Hypo Calcaemia
- ◆ To increase milk yield



DOSAGE

By deep I /M only

- Large Animal:
- Pre Parturition : 5 – 10 ml/ day
 - Post Parturition : 15 – 20 ml / day
 - Debilitated animal : 10 ml (alternate days)
- Small Animal : 1 – 5 ml/ day

AVAILABLE IN: 30 ML vial

CALCIVET - THE BEST A VET CAN GET